

Final: Application of Geostatistical Techniques to Quantify Changes in Water Levels

Prepared for:

Calhoun County Groundwater Conservation District
Refugio Groundwater Conservation District
Texana Groundwater Conservation District
Victoria County Groundwater Conservation District



Prepared by:



INTERA Incorporated
9600 Great Hills Trail
Suite 300W
Austin, TX 78759
512.425.2000

May 2021

APPENDIX E
CHANGES IN WATER LEVEL ELEVATIONS IN THE CHICOT AQUIFER AND
THE EVANGELINE AQUIFER ACROSS CALHOUN, JACKSON, REFUGIO,
AND VICTORIA COUNTIES FROM 2000 TO 2020 IN 10-YEAR AND 5-YEAR
INTERVALS

Final: Application of Geostatistical Techniques to Quantify Changes in Water Levels

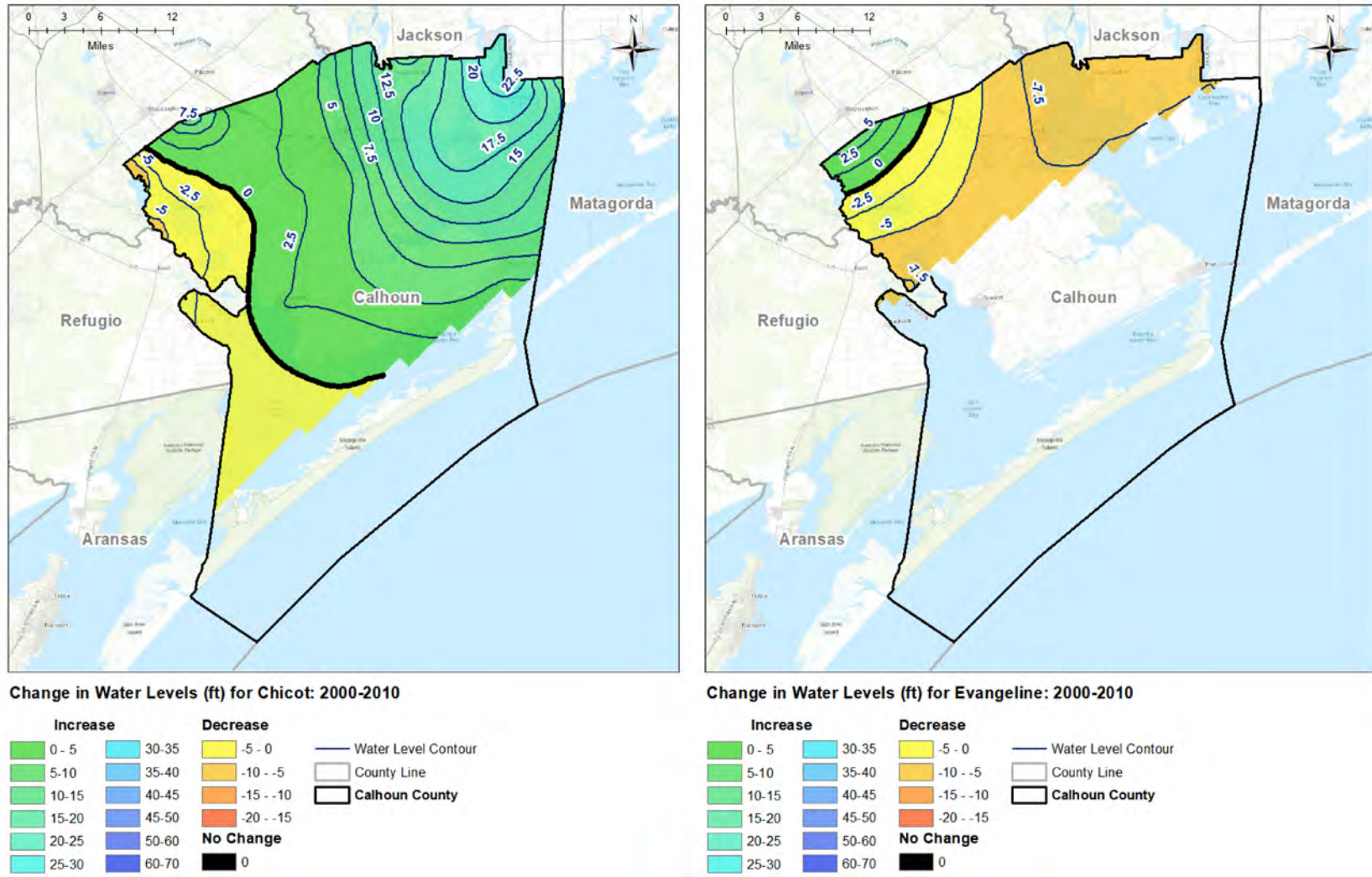


Figure E-1 Change in water level elevation in the Chicot and Evangeline aquifers across Calhoun County for 2000-2010

Final: Application of Geostatistical Techniques to Quantify Changes in Water Levels

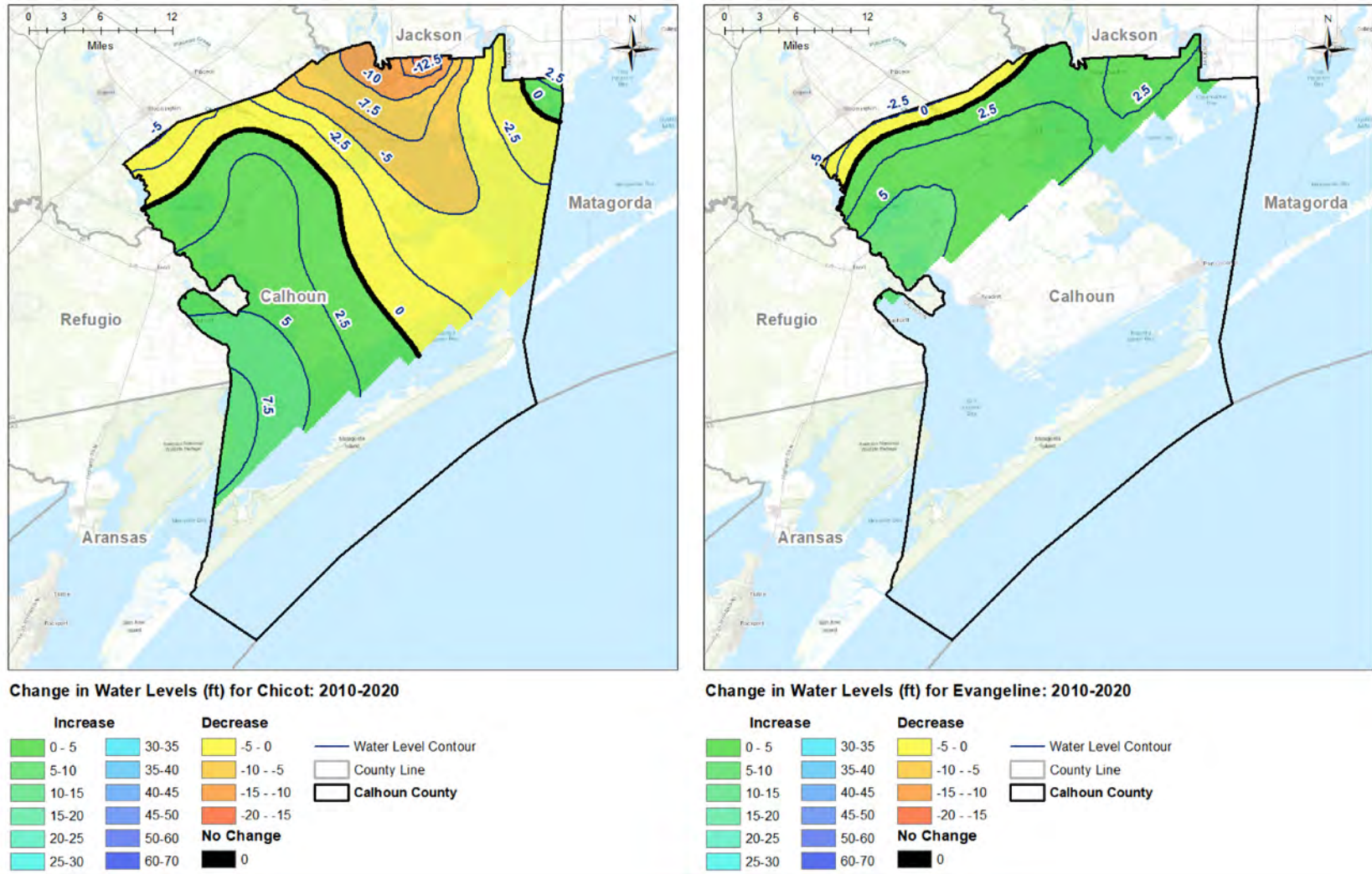


Figure E-2 Change in water level elevation in the Chicot and Evangeline aquifers across Calhoun County for 2010-2020

Final: Application of Geostatistical Techniques to Quantify Changes in Water Levels

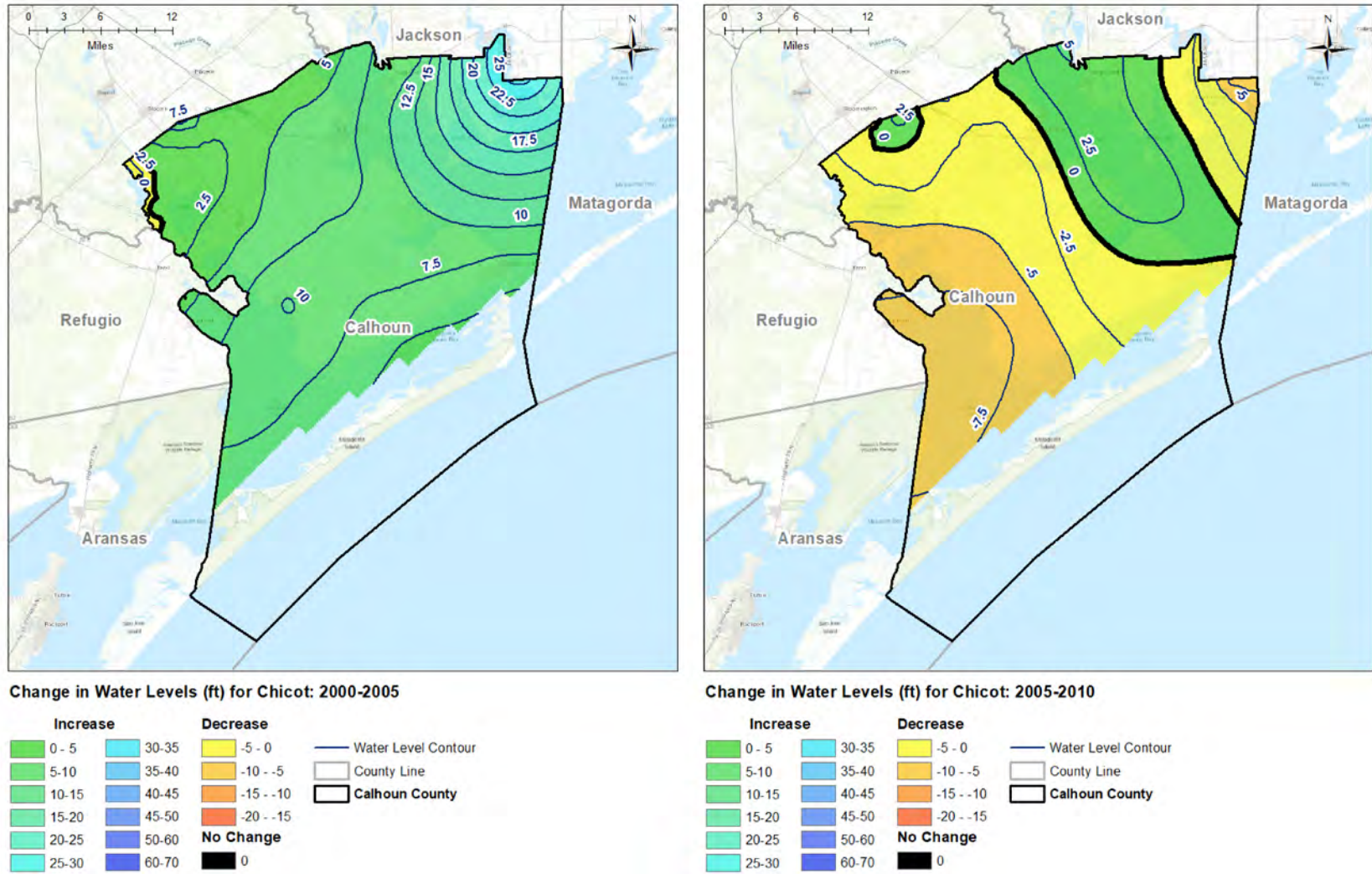


Figure E-3 Change in water level elevation in the Chicot Aquifer across Calhoun County for 2000-2005 and for 2005-2010

Final: Application of Geostatistical Techniques to Quantify Changes in Water Levels

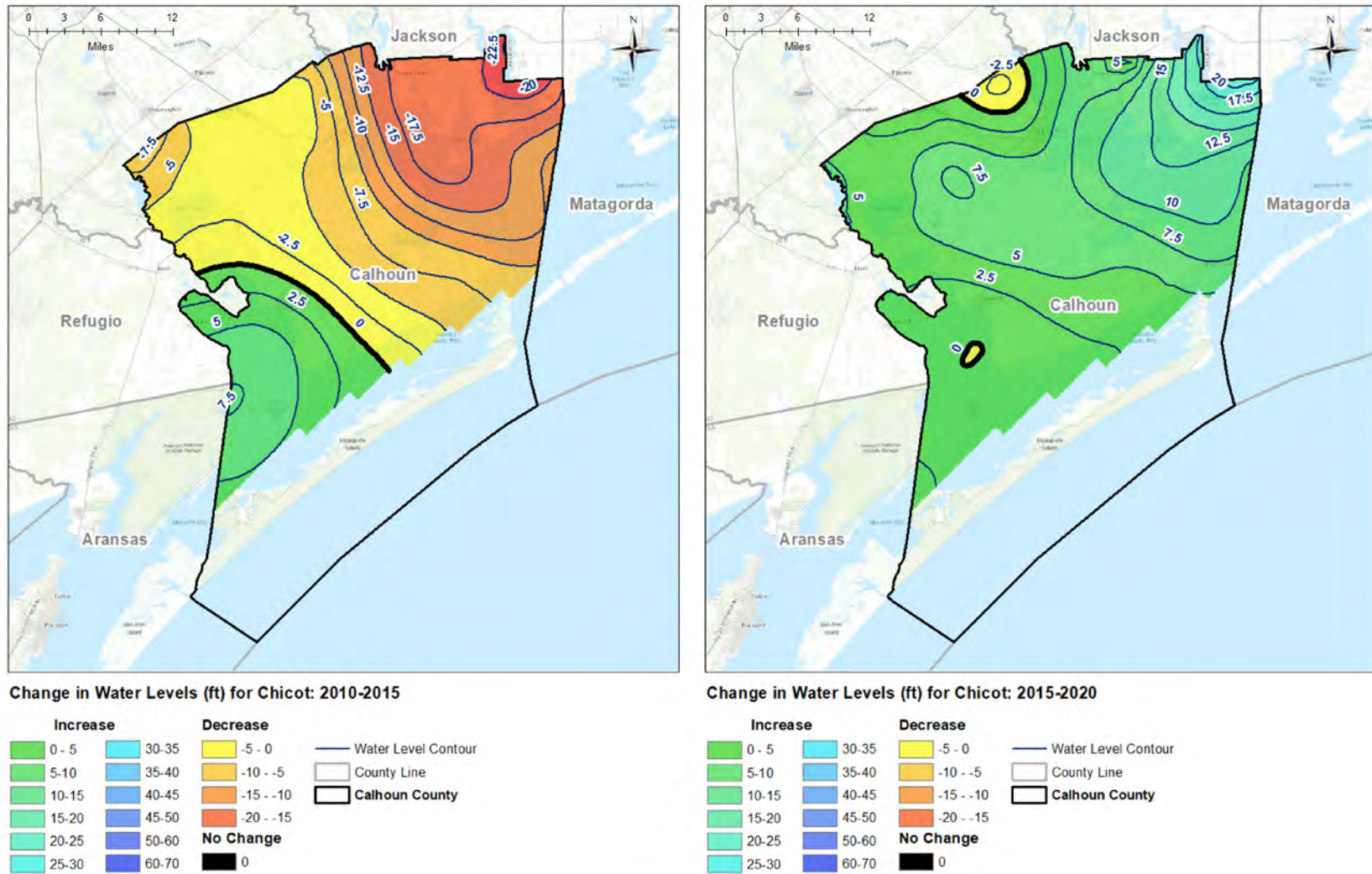


Figure E-4 Change in water level elevation in the Chicot Aquifer across Calhoun County for 2010-2015 and for 2015-2020

Final: Application of Geostatistical Techniques to Quantify Changes in Water Levels

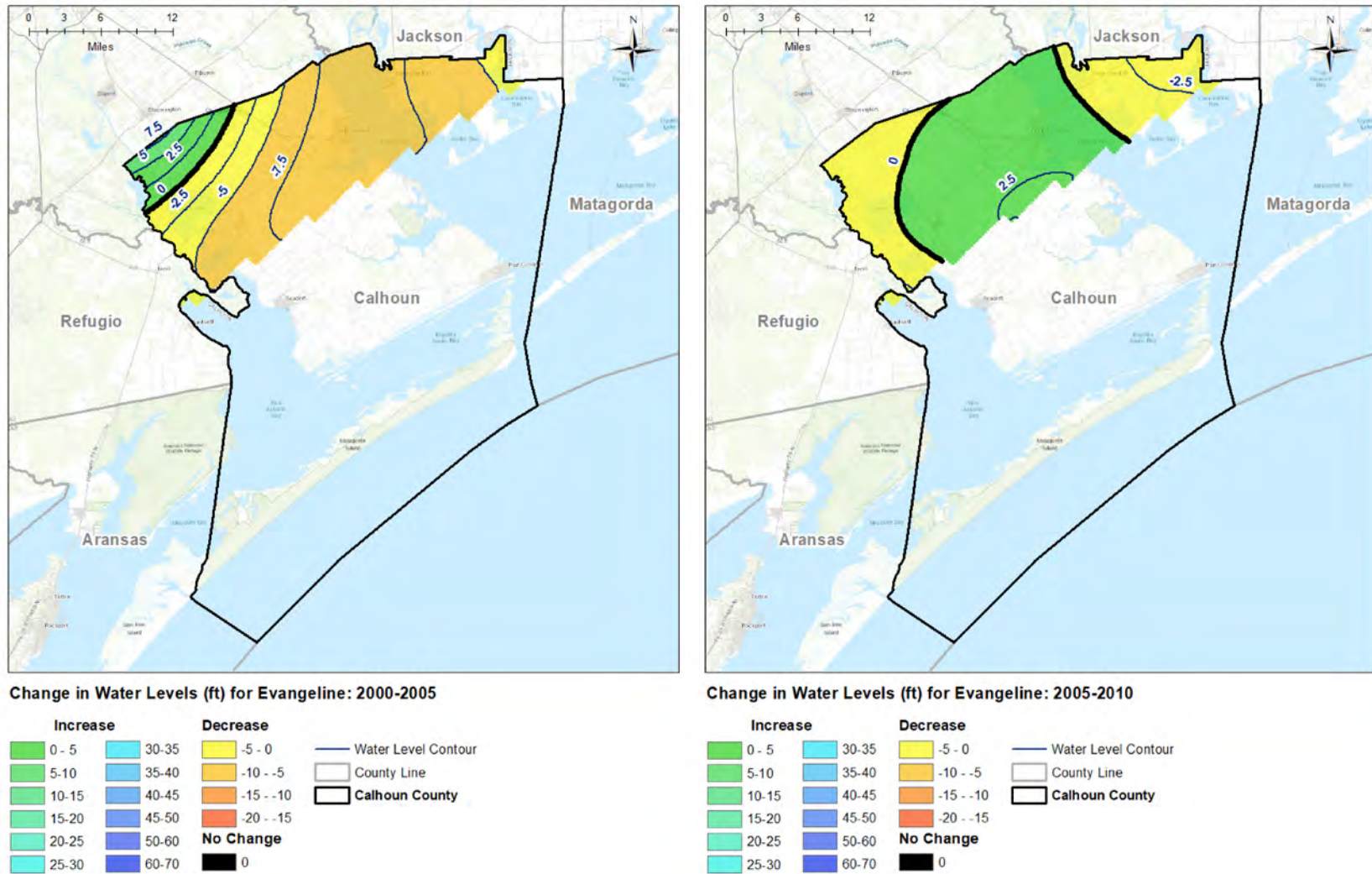


Figure E-5 Change in water level elevation in the Evangeline Aquifer across Calhoun County for 2000-2005 and for 2005-2010

Final: Application of Geostatistical Techniques to Quantify Changes in Water Levels

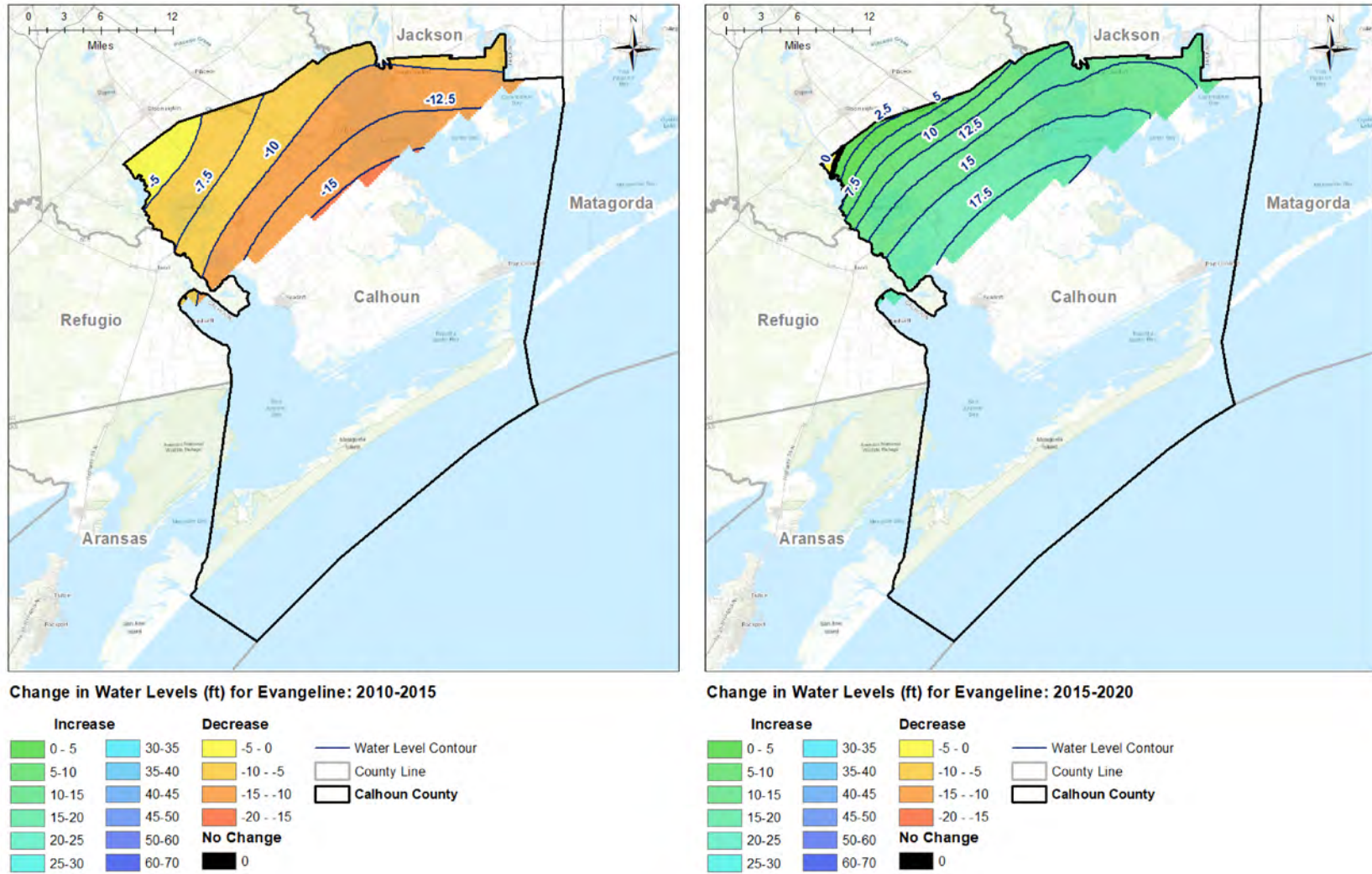


Figure E-6 Change in water level elevation in the Evangeline Aquifer across Calhoun County for 2010-2015 and for 2015-2020

Final: Application of Geostatistical Techniques to Quantify Changes in Water Levels

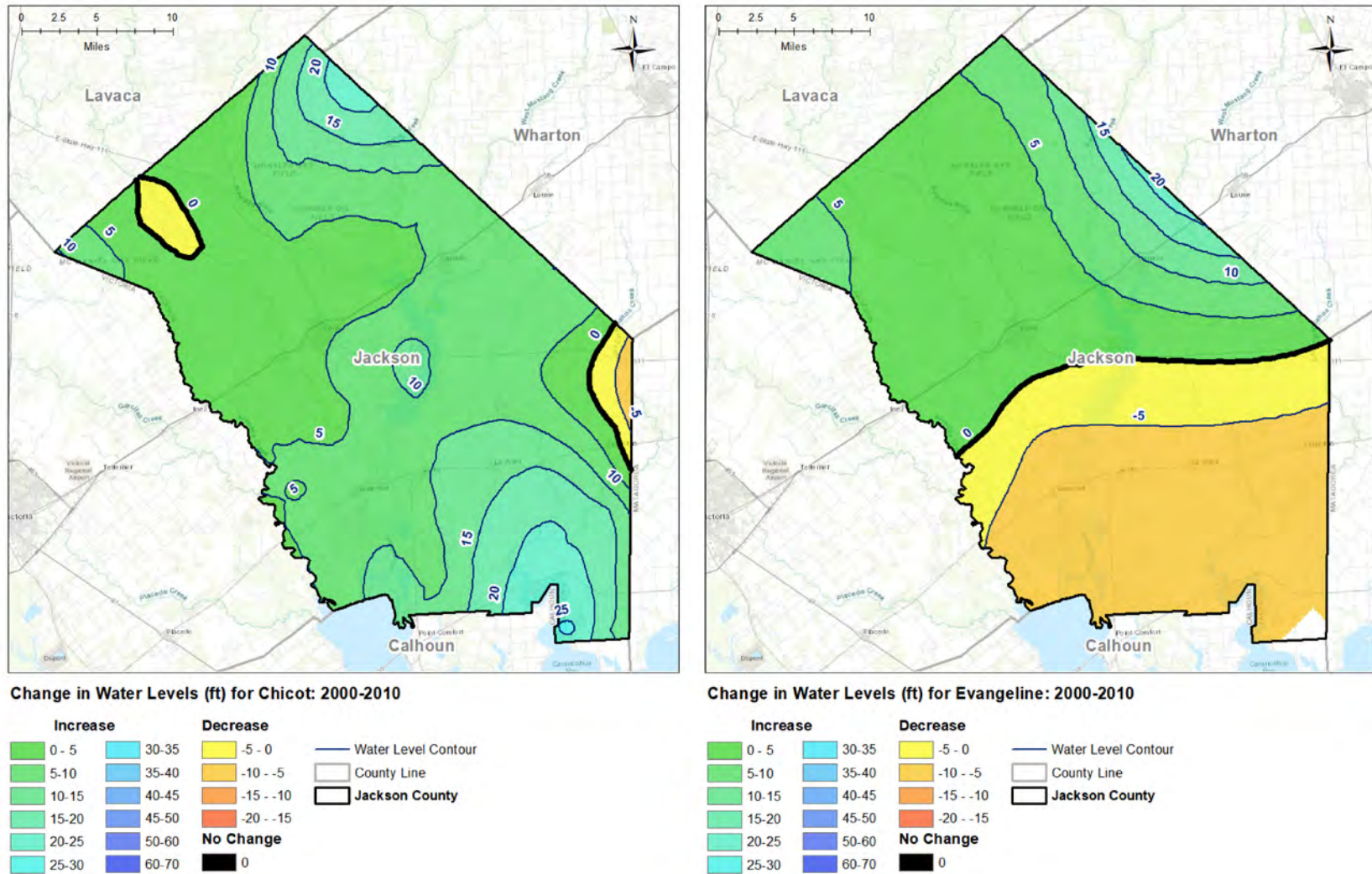


Figure E-7 Change in water level elevation in the Chicot and Evangeline aquifers across Jackson County for 2000-2010

Final: Application of Geostatistical Techniques to Quantify Changes in Water Levels

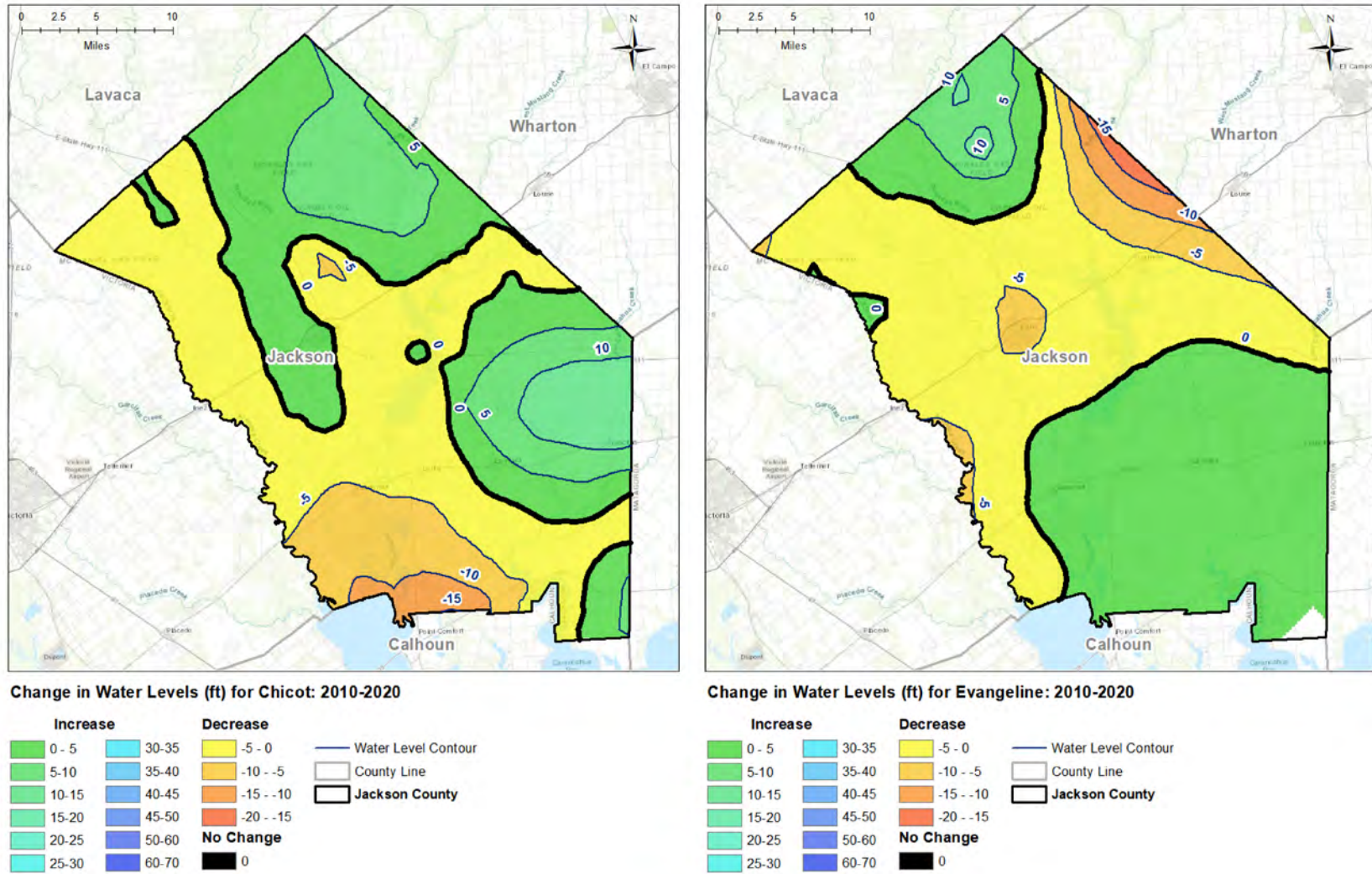


Figure E-8 Change in water level elevation in the Chicot and Evangeline aquifers across Jackson County for 2010-2020

Final: Application of Geostatistical Techniques to Quantify Changes in Water Levels

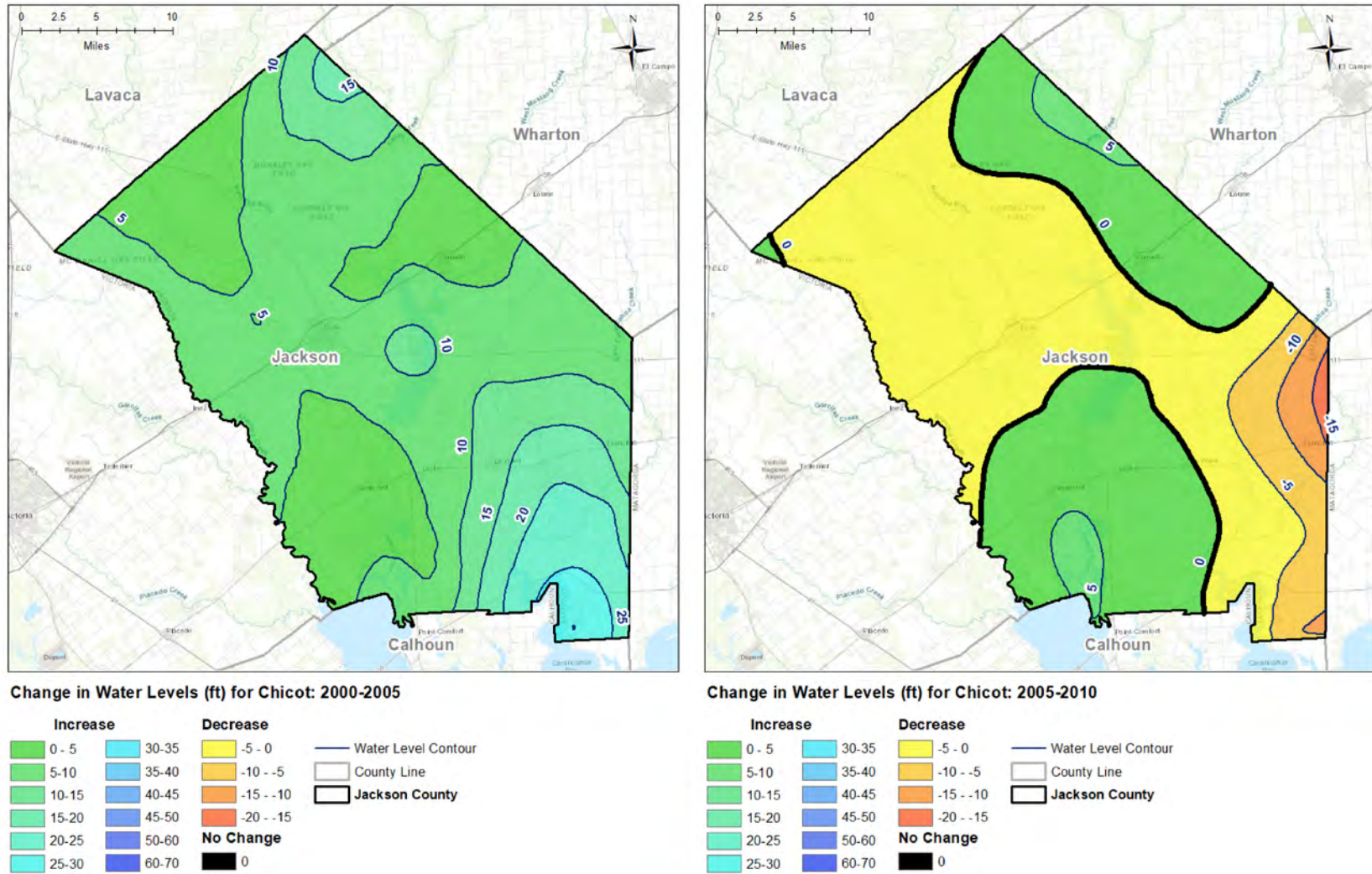


Figure E-9 Change in water level elevation in the Chicot Aquifer across Jackson County for 2000-2005 and for 2005-2010

Final: Application of Geostatistical Techniques to Quantify Changes in Water Levels

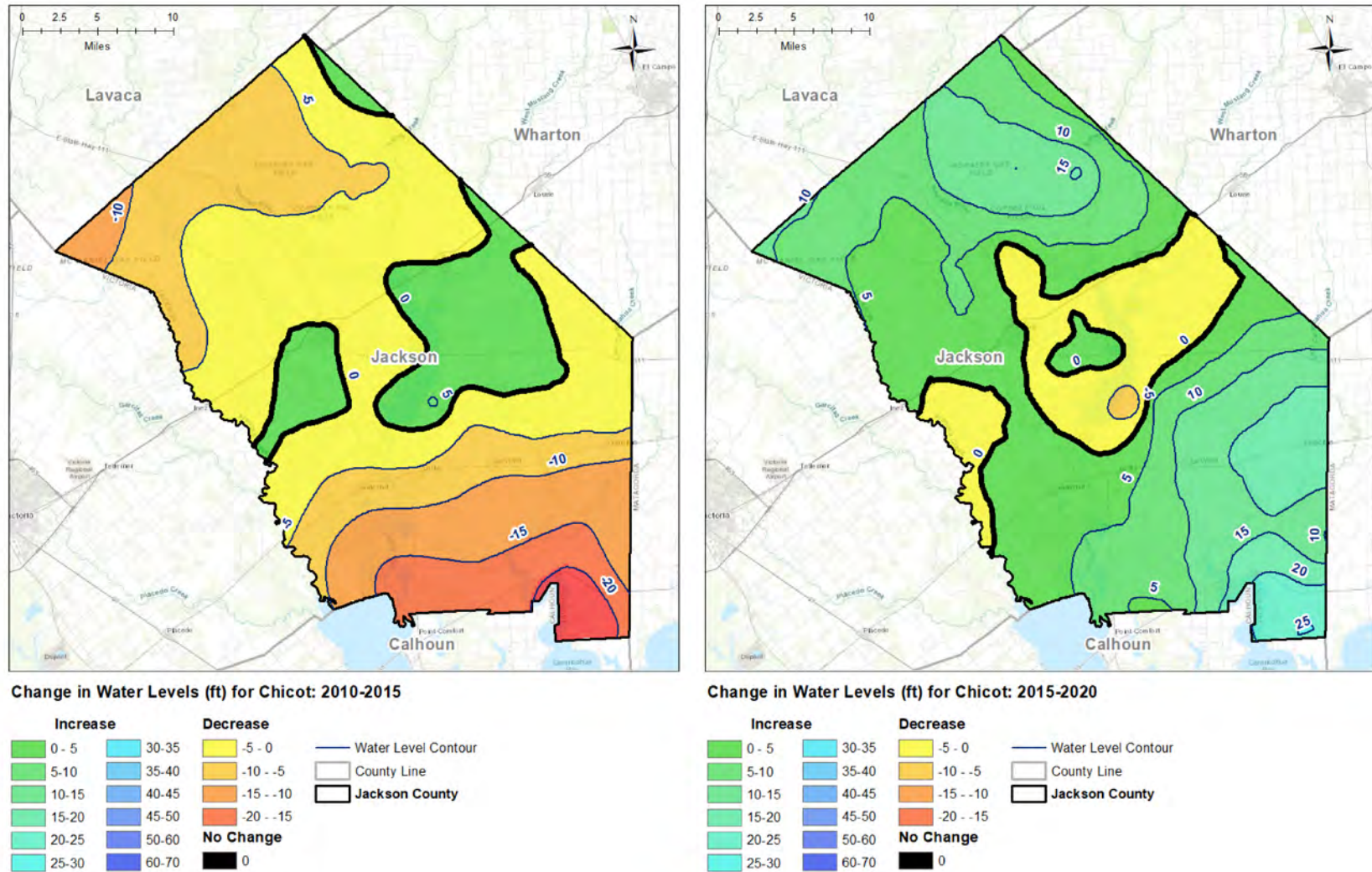


Figure E-10 Change in water level elevation in the Chicot Aquifer across Jackson County for 2010-2015 and for 2015-2020

Final: Application of Geostatistical Techniques to Quantify Changes in Water Levels

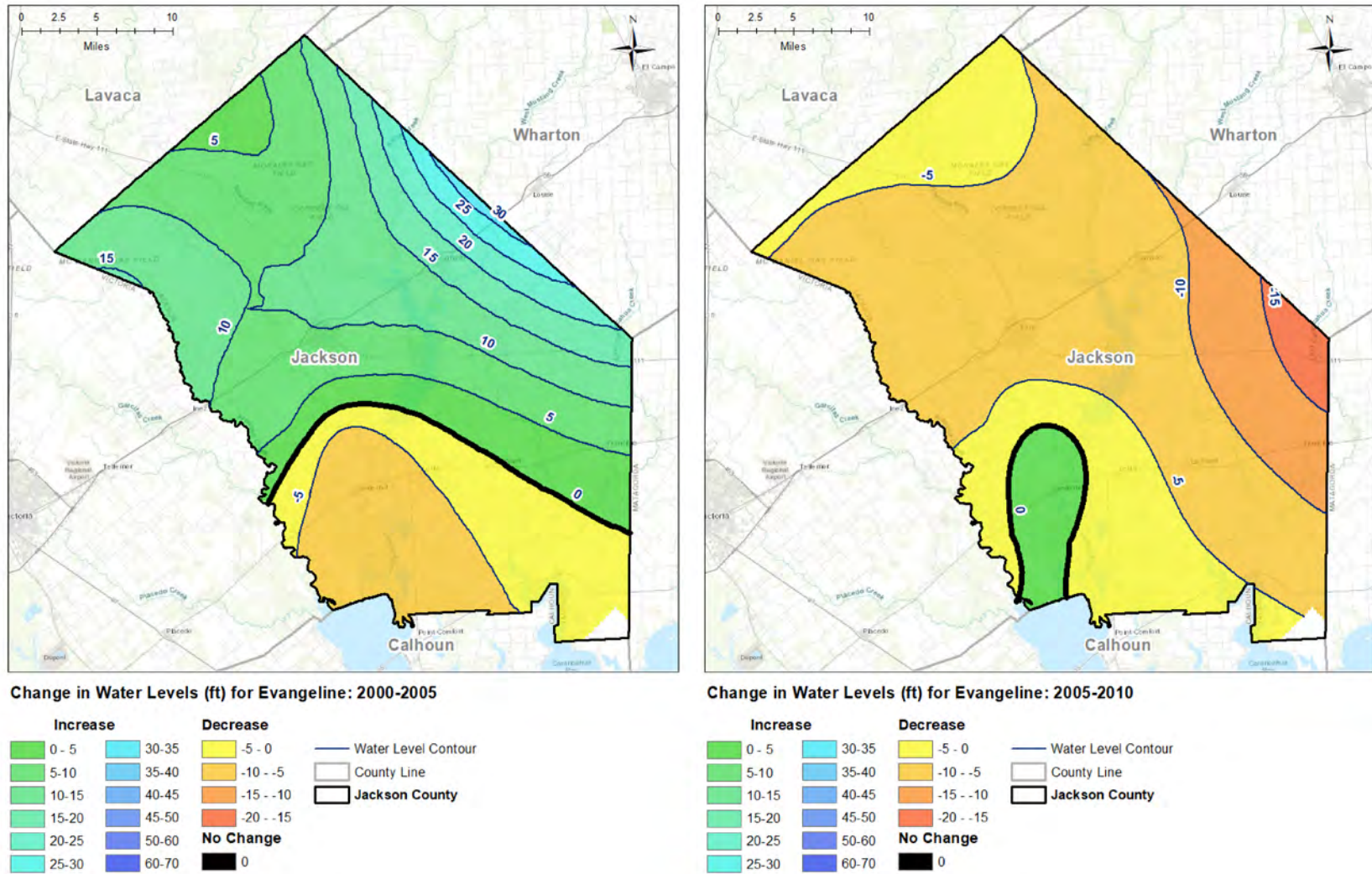


Figure E-11 Change in water level elevation in the Evangeline Aquifer across Jackson County for 2000-2005 and for 2005-2010

Final: Application of Geostatistical Techniques to Quantify Changes in Water Levels

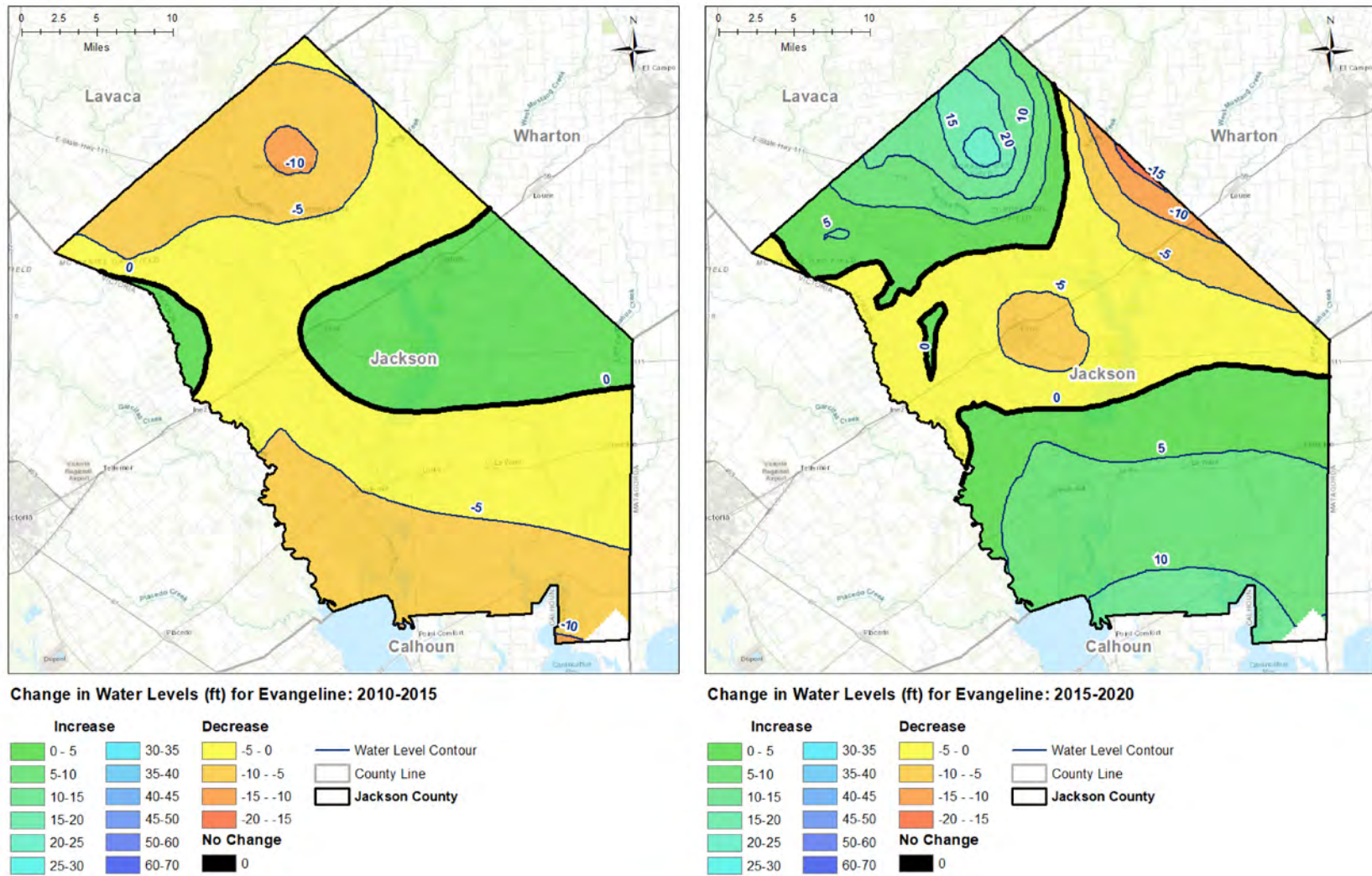


Figure E-12 Change in water level elevation in the Evangeline Aquifer across Jackson County for 2010-2015 and for 2015-2020

Final: Application of Geostatistical Techniques to Quantify Changes in Water Levels

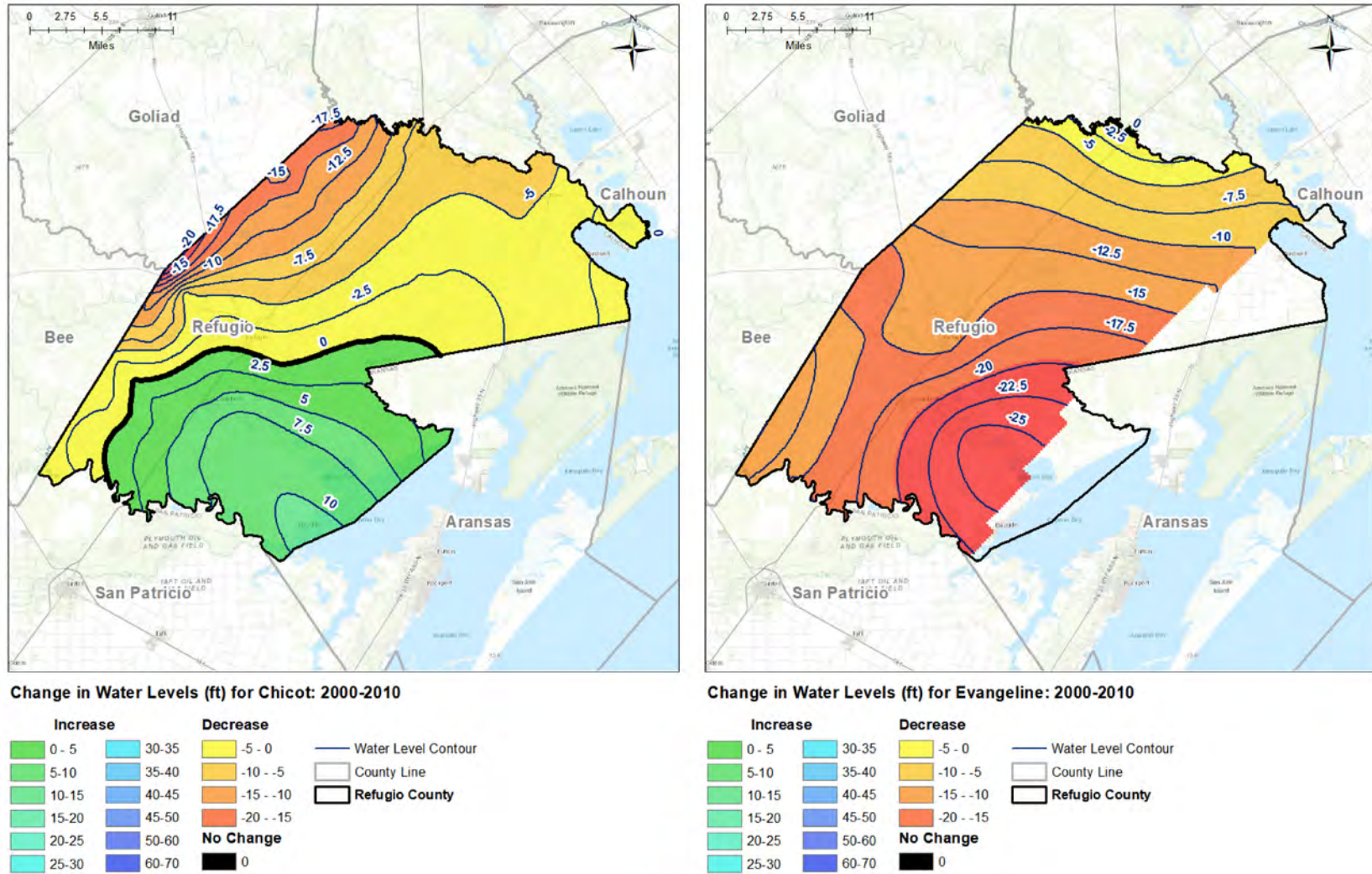


Figure E-13 Change in water level elevation in the Chicot and Evangeline aquifers across Refugio County for 2000-2010

Final: Application of Geostatistical Techniques to Quantify Changes in Water Levels

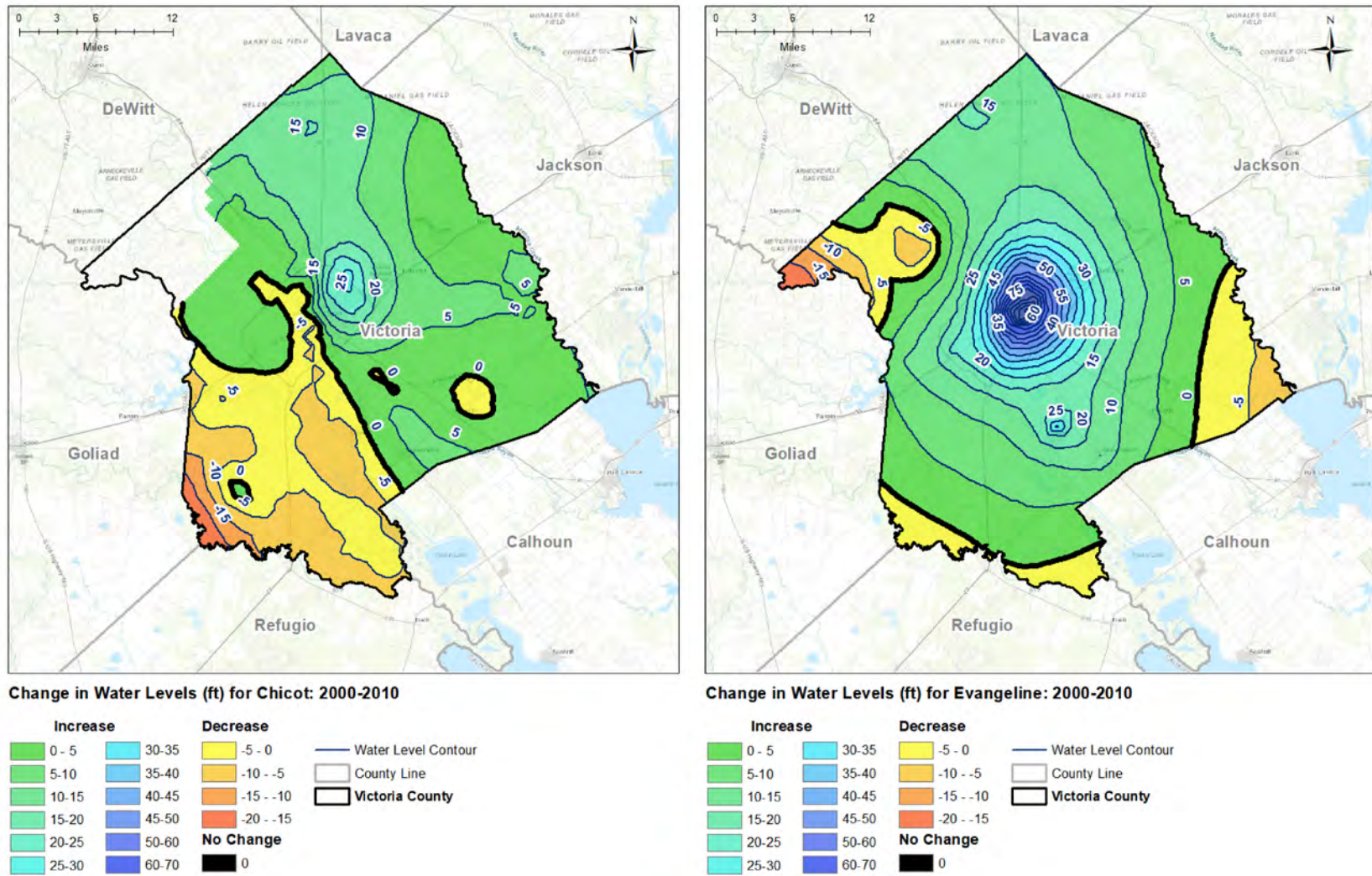


Figure E-14 Change in water level elevation in the Chicot and Evangeline aquifers across Refugio County for 2010-2020

Final: Application of Geostatistical Techniques to Quantify Changes in Water Levels

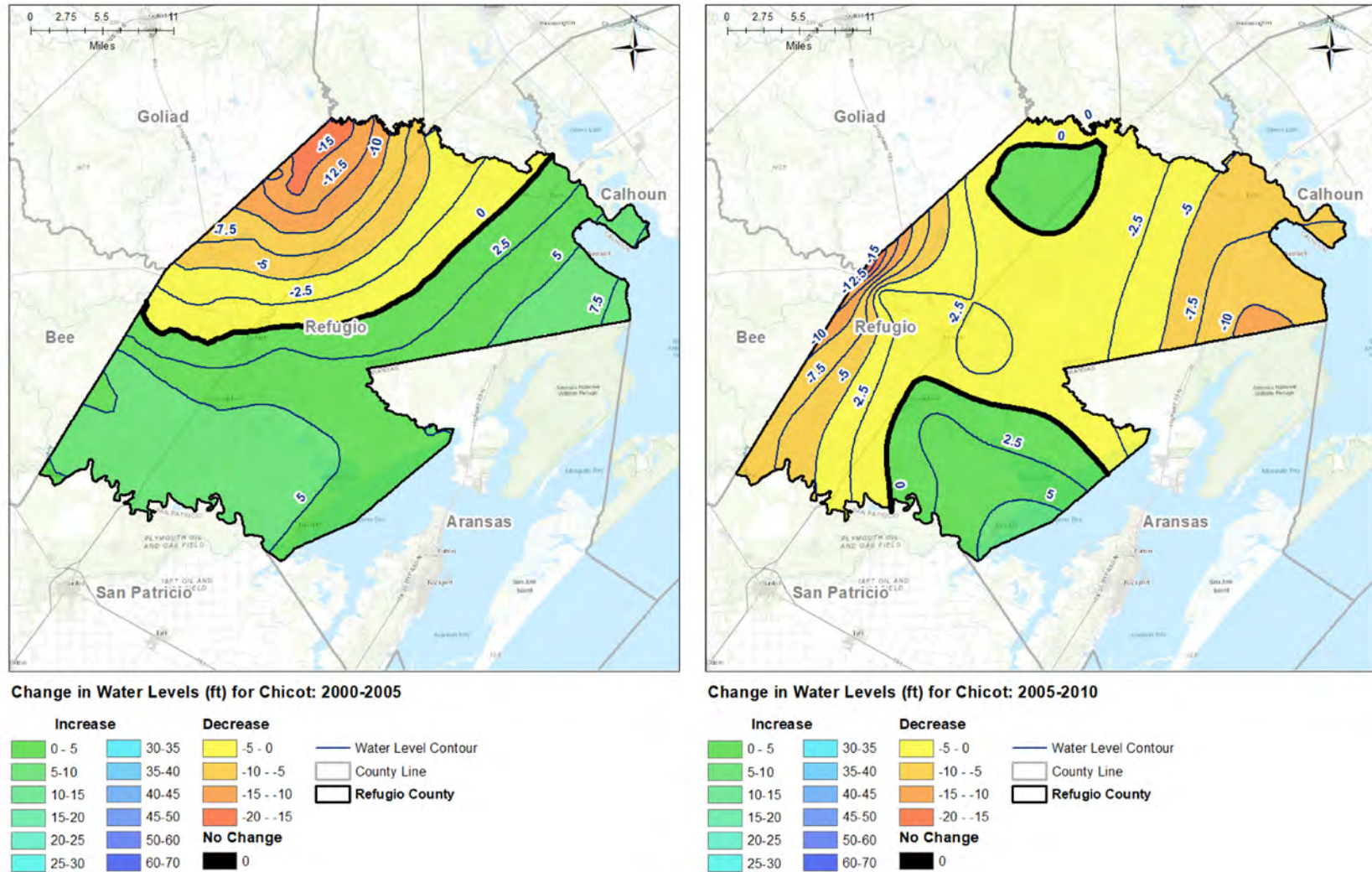


Figure E-15 Change in water level elevation in the Chicot Aquifer across Refugio County for 2000-2005 and for 2005-2010

Final: Application of Geostatistical Techniques to Quantify Changes in Water Levels

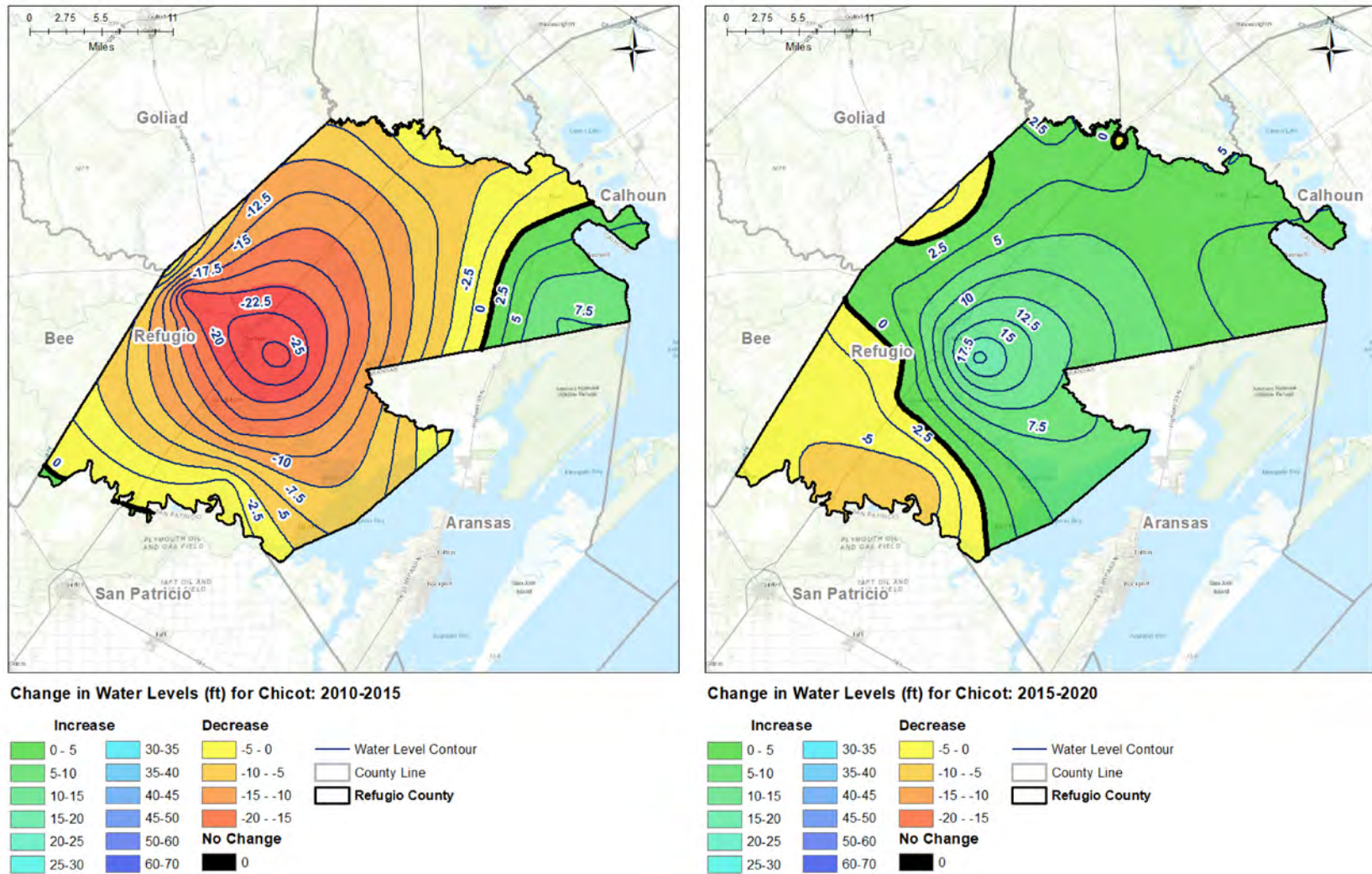


Figure E-16 Change in water level elevation in the Chicot Aquifer across Refugio County for 2010-2015 and for 2015-2020

Final: Application of Geostatistical Techniques to Quantify Changes in Water Levels

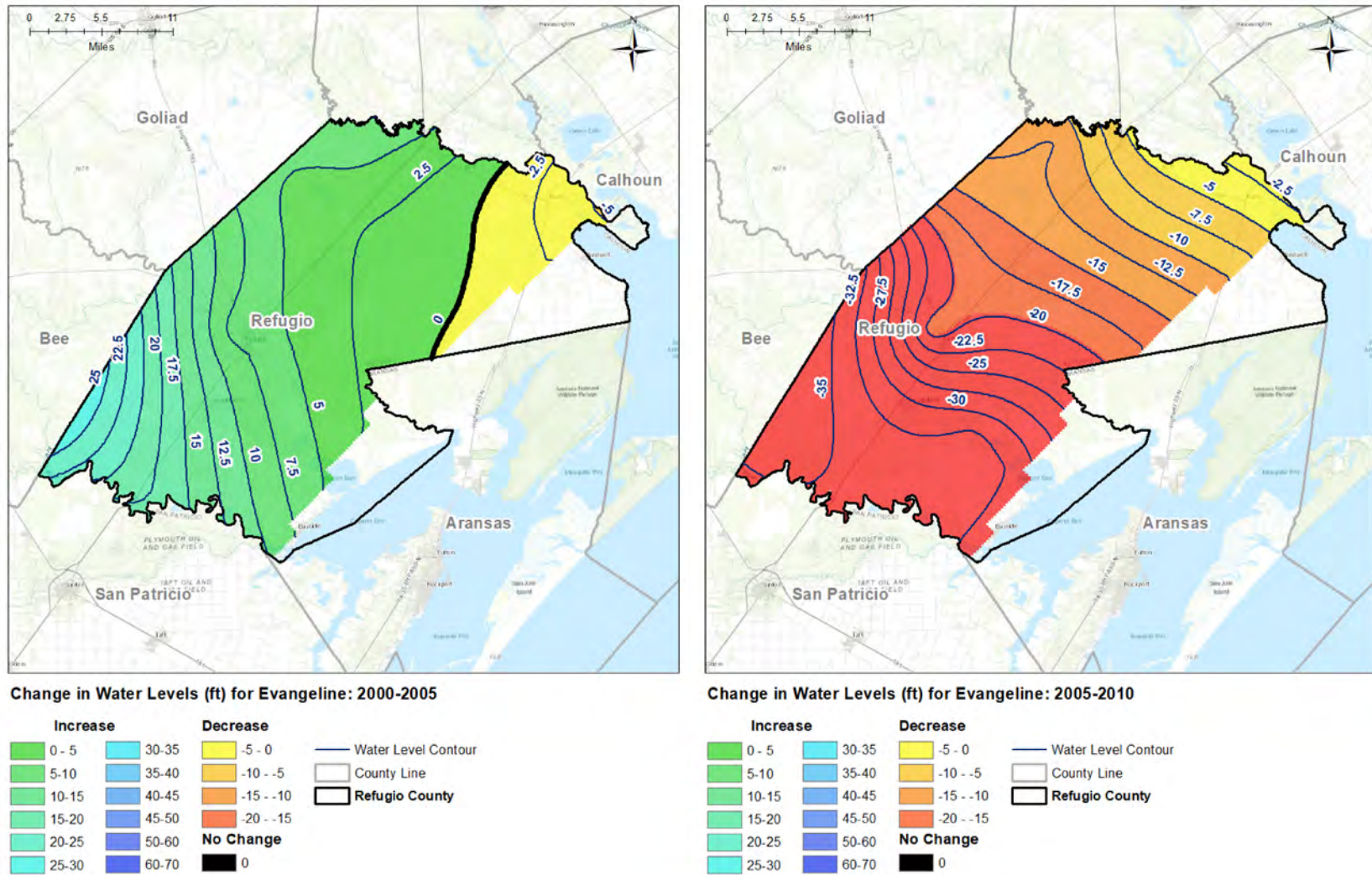


Figure E-17 Change in water level elevation in the Evangeline Aquifer across Refugio County for 2000-2005 and for 2005-2010

Final: Application of Geostatistical Techniques to Quantify Changes in Water Levels

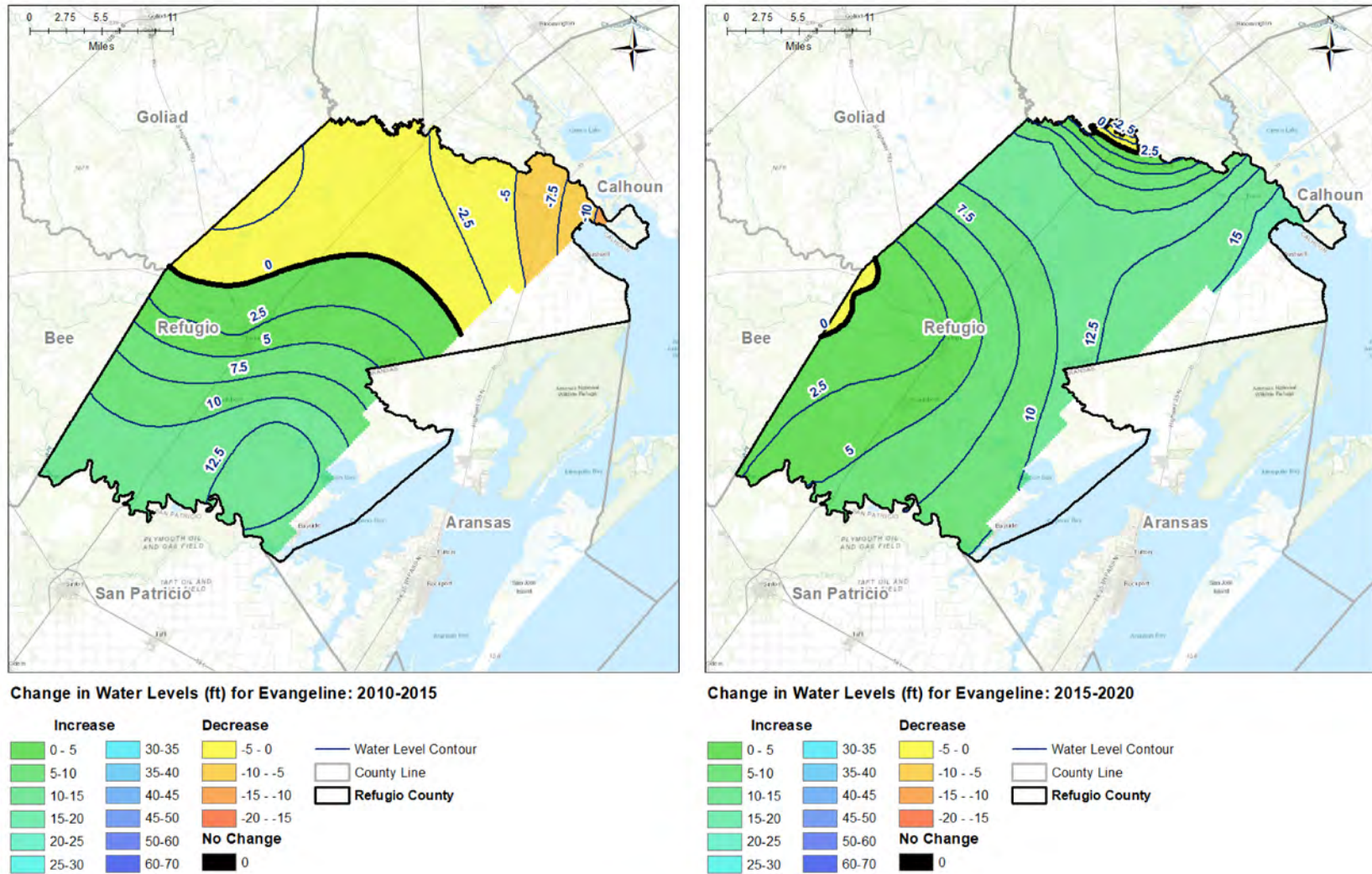


Figure E-18 Change in water level elevation in the Evangeline Aquifer across Refugio County for 2010-2015 and for 2015-2020

Final: Application of Geostatistical Techniques to Quantify Changes in Water Levels

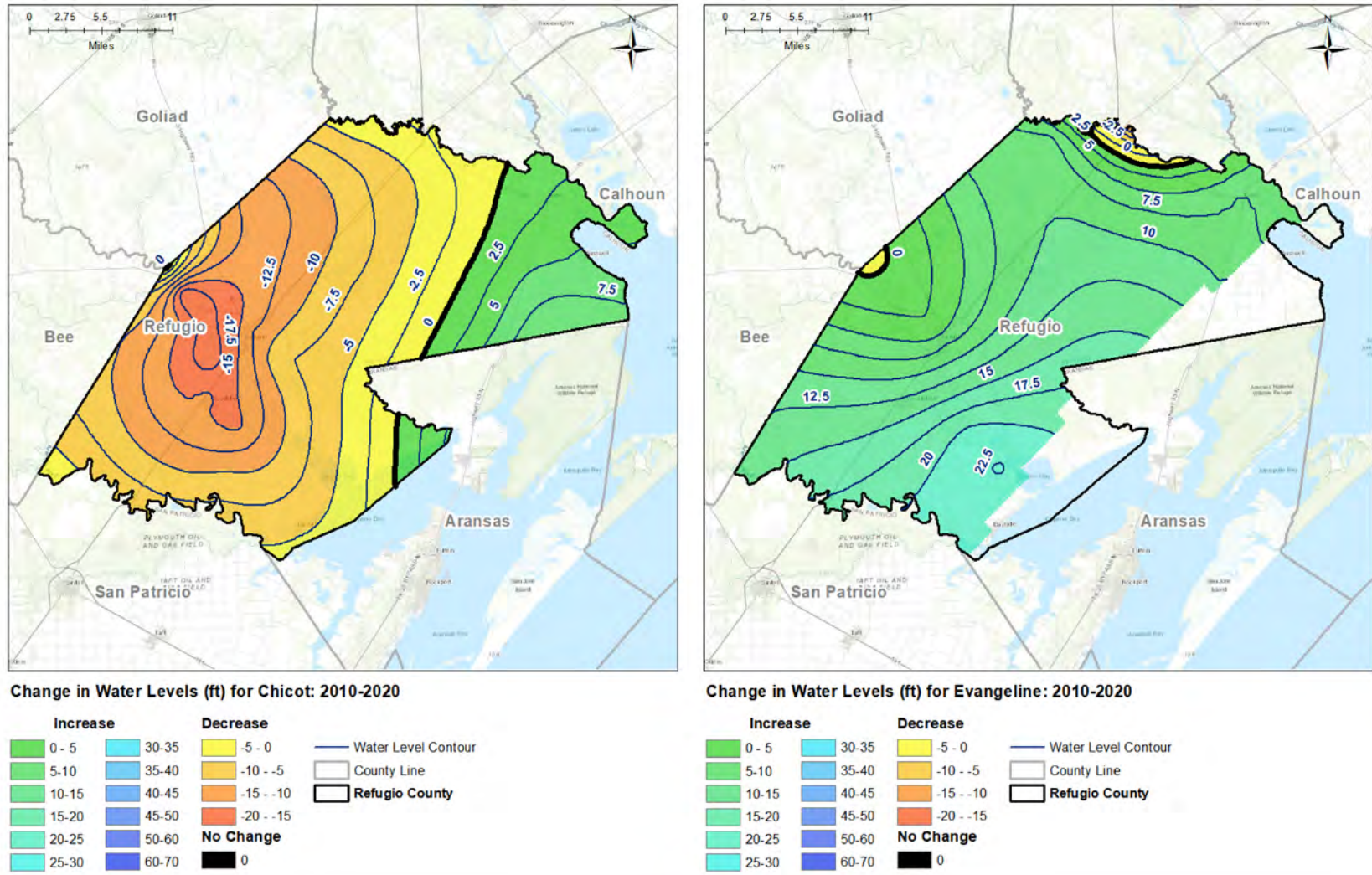


Figure E-19 Change in water level elevation in the Chicot and Evangeline aquifers across Victoria County for 2000-2010

Final: Application of Geostatistical Techniques to Quantify Changes in Water Levels

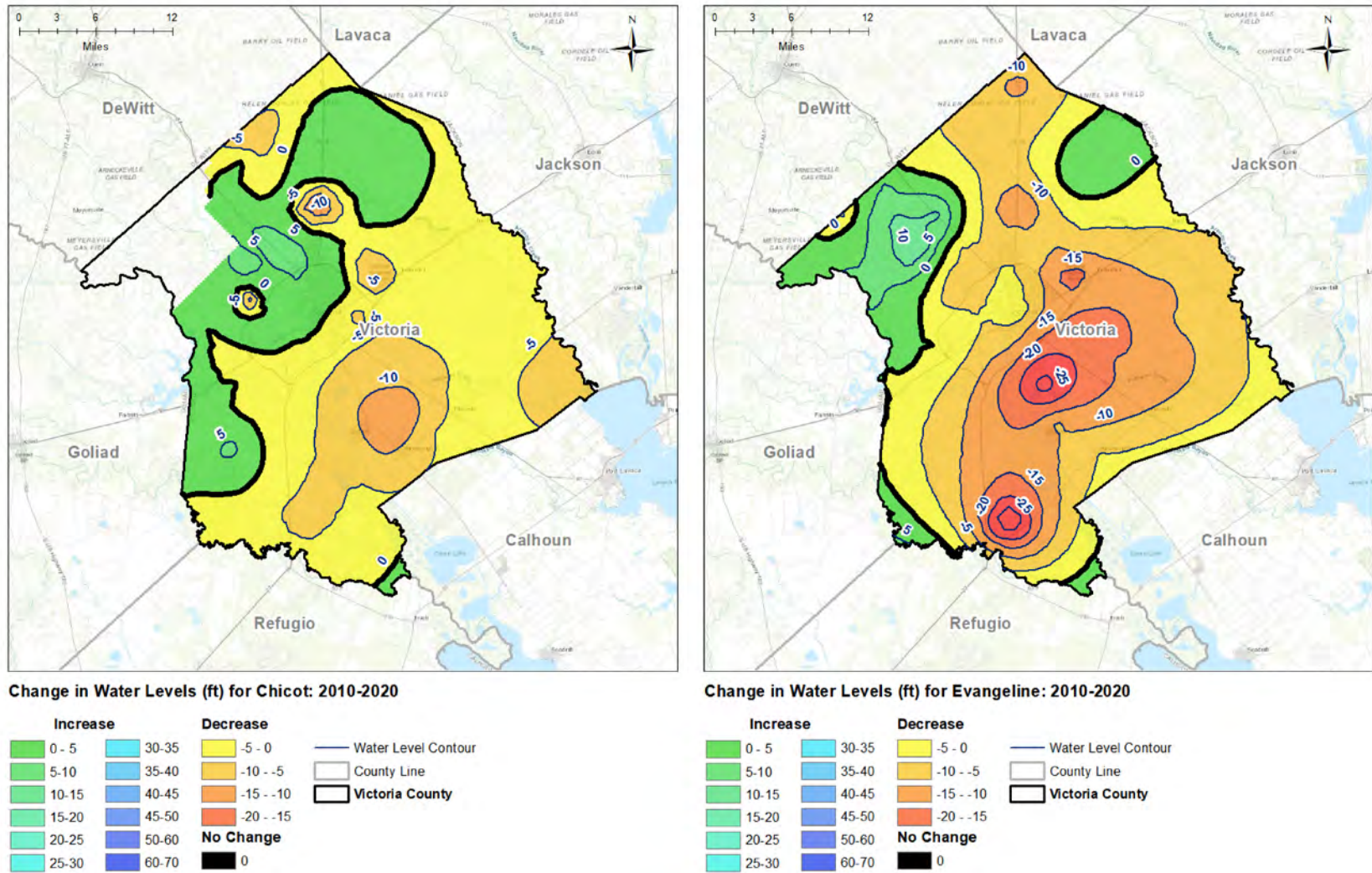


Figure E-20 Change in water level elevation in the Chicot and Evangeline aquifers across Victoria County for 2010-2020

Final: Application of Geostatistical Techniques to Quantify Changes in Water Levels

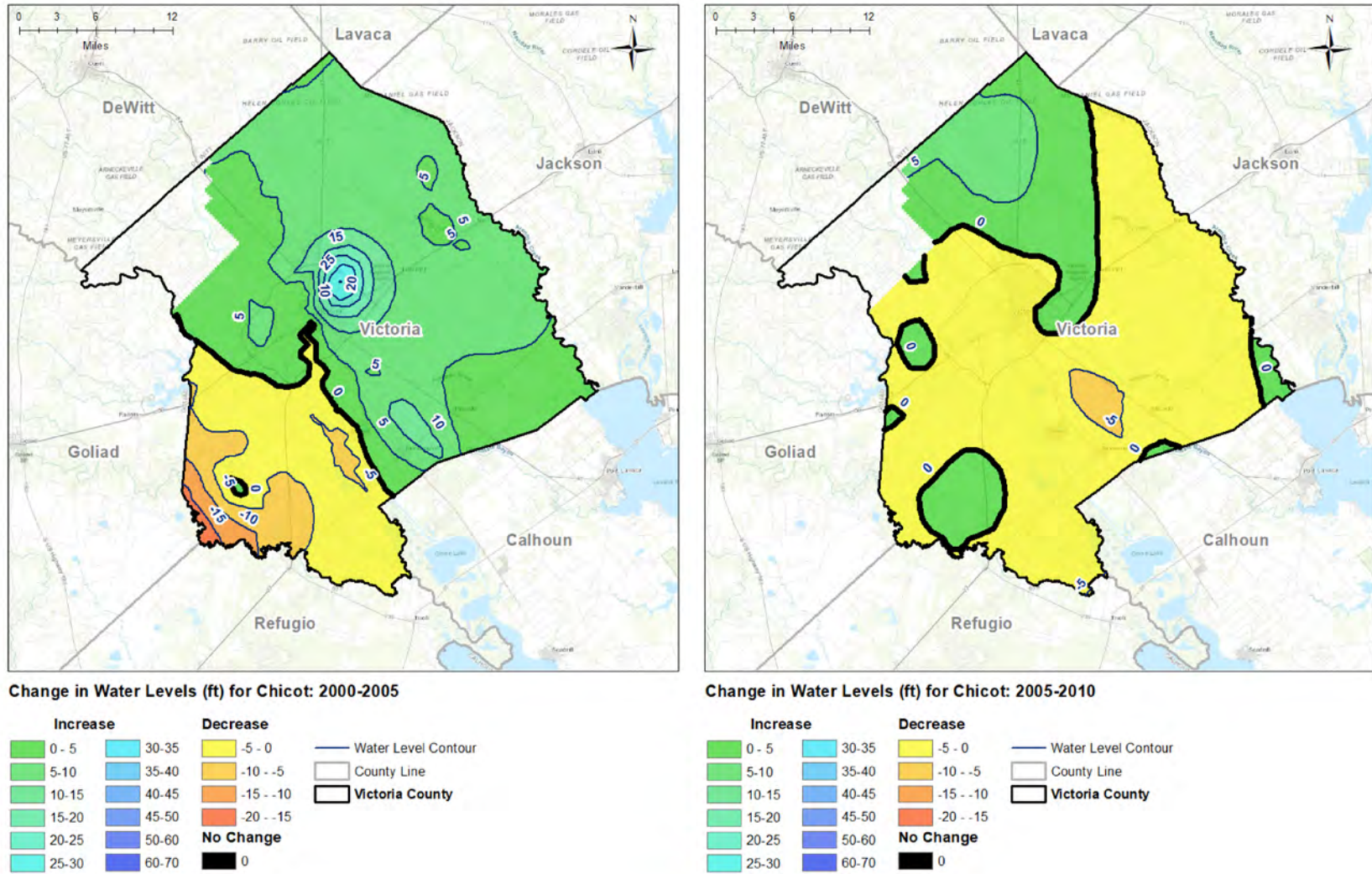


Figure E-21 Change in water level elevation in the Chicot Aquifer across Victoria County for 2000-2005 and for 2005-2010

Final: Application of Geostatistical Techniques to Quantify Changes in Water Levels

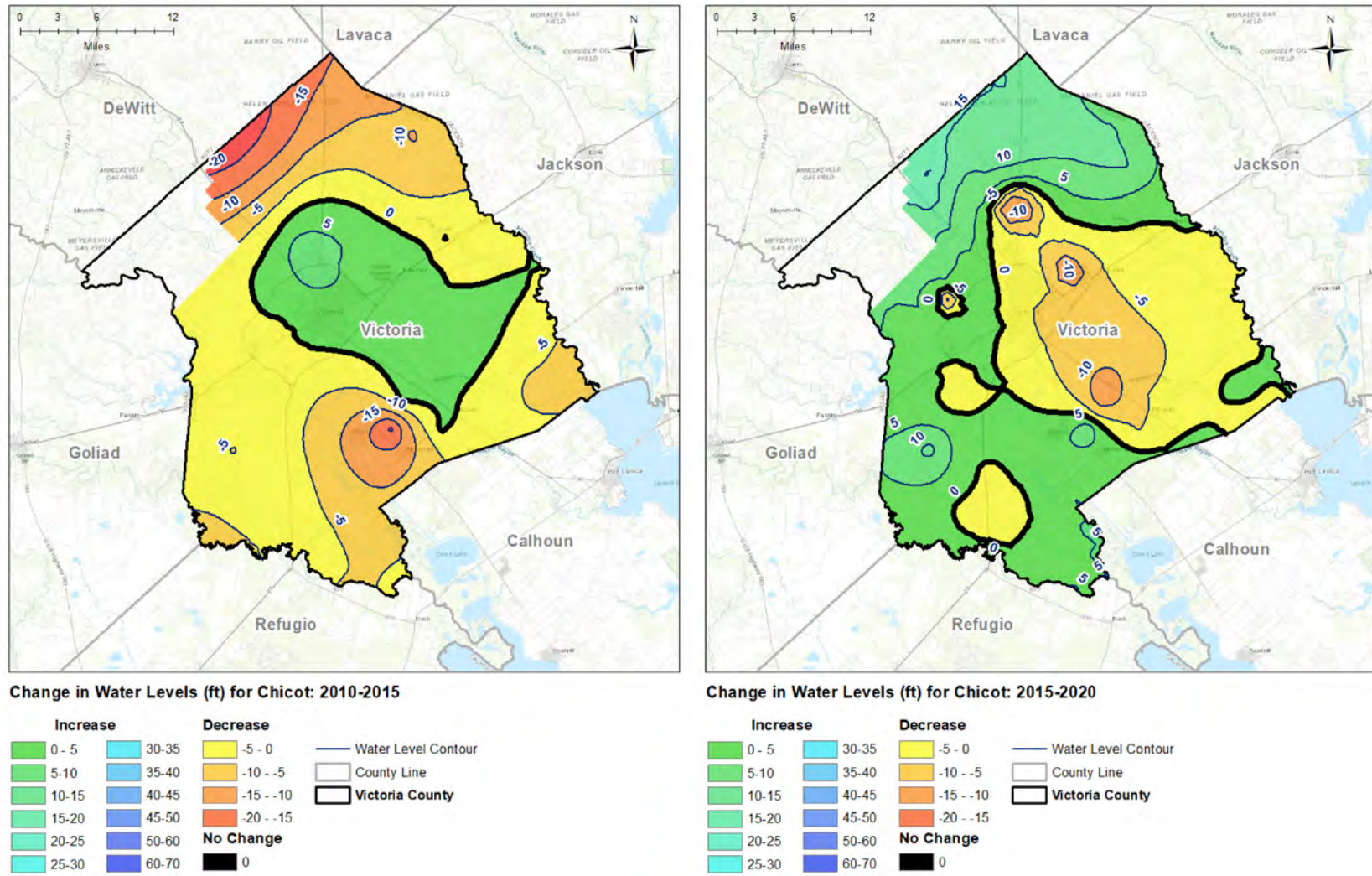


Figure E-22 Change in water level elevation in the Chicot Aquifer across Victoria County for 2010-2015 and for 2015-2020

Final: Application of Geostatistical Techniques to Quantify Changes in Water Levels

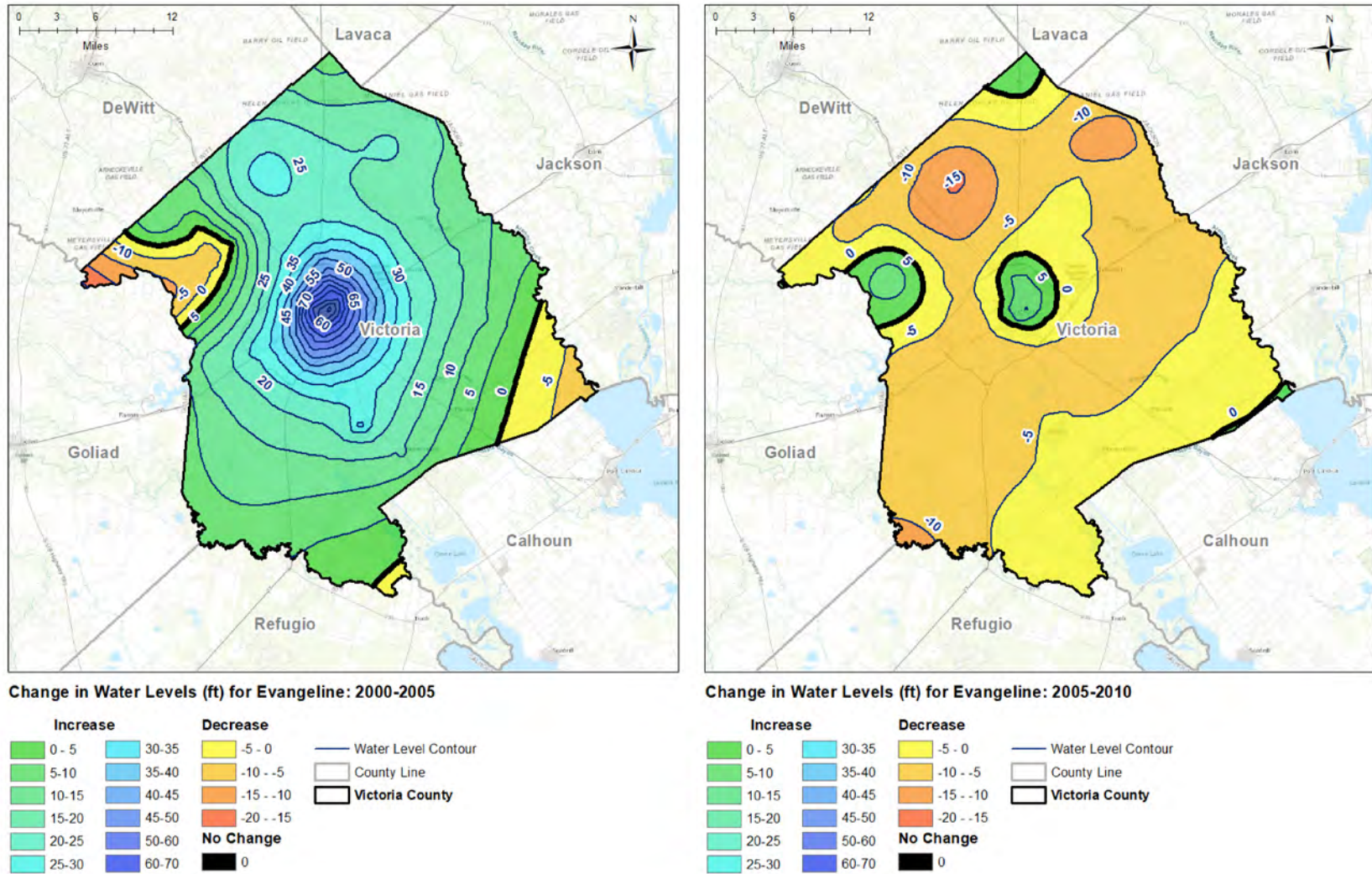


Figure E-23 Change in water level elevation in the Evangeline Aquifer across Victoria County for 2000-2005 and for 2005-2010

Final: Application of Geostatistical Techniques to Quantify Changes in Water Levels

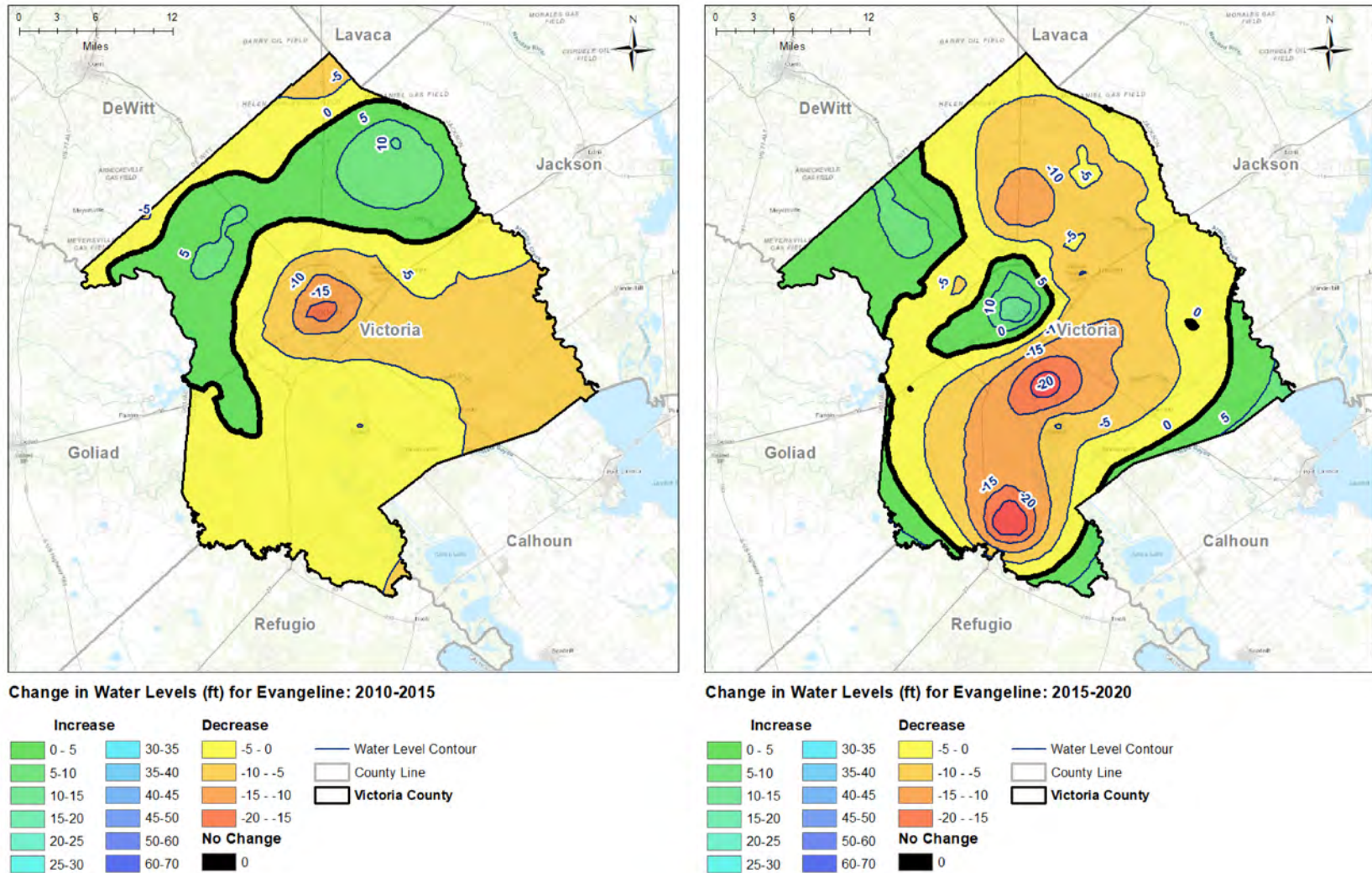


Figure E-24 Change in water level elevation in the Evangeline Aquifer across Victoria County for 2010-2015 and for 2015-2020